



Chelmer Road, London, E9

BUTLER & STAG

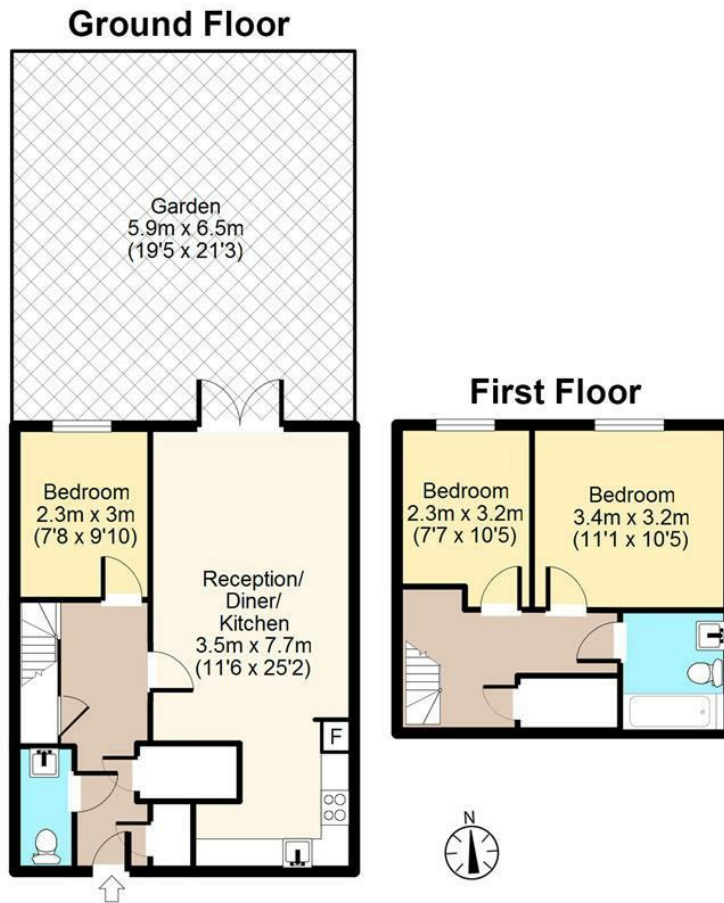


A 3 bed unfurnished split level garden maisonette a short walk to Homerton Overground Station and Victoria Park. Lounge, fitted appliance kitchen, bathroom/wc & Seperate W.c, gas central heating, double glazed and sole use of garden.





Chelmer Road, E9



Total area: approx. 76 sq. metres (817 sq. feet)
For illustration purposes only - not to scale
www.lpaplus.co.uk

IMPORTANT NOTICE - These particulars have been prepared in good faith and they are not intended to constitute part of an offer or contract. We have not performed a structural survey on this property and the services, appliances and specific fittings have not been tested. All photographs, measurements, floor plans and distances referred to are given as a guide and should not be relied upon.

BUTLER & STAG

☎ 020 8102 1236

🏠 508 Roman Road, Bow, London, E3 5LU

✉ bow@butlerandstag.com

www.butlerandstag.uk